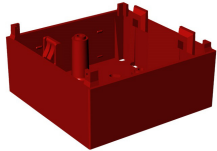


## EV-MCP2-IP24 Installation instructions

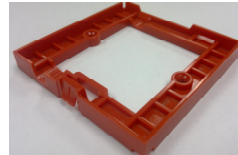
1. For Surface Mounting, carefully cut/drill holes for cables/glands, in the Back Box, if required for the installation. Fix the Back Box to wall using screws provided, through the pre-drilled holes.

2. For Flush Mounting, Fix the Wall Plate to wall using screws provided.

**NOTE:** For Flush Mounting use 35mm Metal Knockout box or Dry lining box.



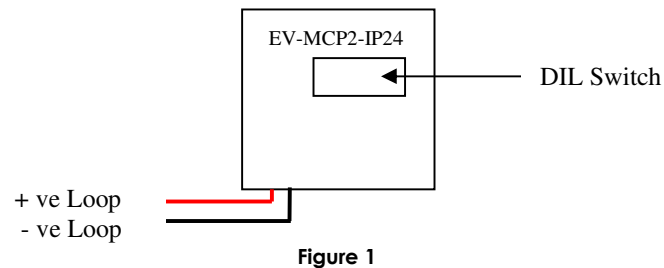
Surface Mount Back Box



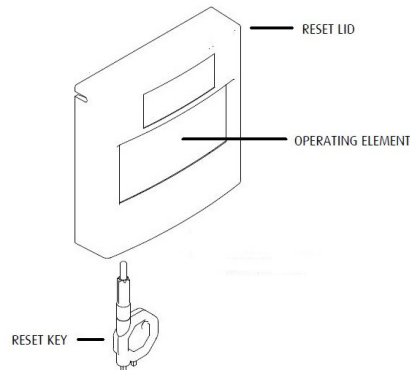
Flush Mount Wall Plate

3. Set the device address using the 8-Way DIL switch on the reverse of the Unit.

4. Make the Loop connections as shown in figure 1 below, using the mating connectors provided.



5. Clip the Reset Lid to the Back Box, ensuring the clip is full engaged.



## EV-MCP2-IP24 Installation instructions

6. To Activate the Call Point, Press the Operating Face, where indicated by the arrows, until it Clicks and the Yellow/Black flag is clearly visible.

7. To Reset the Call Point, Insert the Reset Key where shown in Figure 2 and turn anti-clockwise until it Clicks and the Yellow/Black flag has retracted from view.

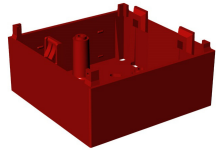
EV-MCP2-IP24 - Resettable Manual Call Point	
<b>Nittan Europe Ltd.</b> Hiple Street, Old Woking, Surrey, GU22 9LQ United Kingdom	<b>Tel:</b> +44 (0) 1483 769 555 <b>Fax:</b> +44 (0) 1483 756 686 <b>Email:</b> <a href="mailto:sales@nittan.co.uk">sales@nittan.co.uk</a> <b>Web:</b> <a href="http://www.nittan.co.uk">www.nittan.co.uk</a>
<b>D.o.P. Number: 01690</b>	
<b>EN54-11: 2001 - Type A Indoor Manual Call Point IP24</b>	
<b>For use with Nittan Evolution Protocol Only.</b> <b>Loop Voltage: 20 to 35 V d.c.</b> <b>Quiescent Current: 200µA</b> <b>Alarm Current: 2mA (LED ON).</b> <b>Ingress Protection: IP24</b> <b>Mass: 115g</b>  <b>Technical Data Sheet: TD-EV-MCP2-IP24</b>	

## EV-MCP2-IP24 Installation instructions

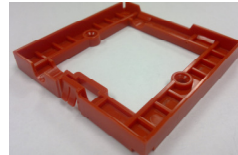
1. For Surface Mounting, carefully cut/drill holes for cables/glands, in the Back Box, if required for the installation. Fix the Back Box to wall using screws provided, through the pre-drilled holes.

2. For Flush Mounting, Fix the Wall Plate to wall using screws provided.

**NOTE:** For Flush Mounting use 35mm Metal Knockout box or Dry lining box.



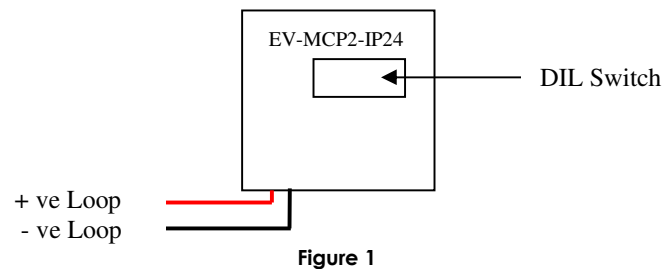
Surface Mount Back Box



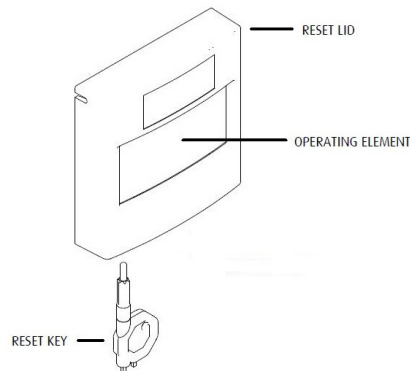
Flush Mount Wall Plate

3. Set the device address using the 8-Way DIL switch on the reverse of the Unit.

4. Make the Loop connections as shown in figure 1 below, using the mating connectors provided.



5. Clip the Reset Lid to the Back Box, ensuring the clip is full engaged.



## EV-MCP2-IP24 Installation instructions

6. To Activate the Call Point, Press the Operating Face, where indicated by the arrows, until it Clicks and the Yellow/Black flag is clearly visible.

7. To Reset the Call Point, Insert the Reset Key where shown in Figure 2 and turn anti-clockwise until it Clicks and the Yellow/Black flag has retracted from view.

EV-MCP2-IP24 - Resettable Manual Call Point.	
<b>Nittan Europe Ltd.</b> Hiple Street, Old Woking, Surrey, GU22 9LQ United Kingdom	<b>Tel:</b> +44 (0) 1483 769 555 <b>Fax:</b> +44 (0) 1483 756 686 <b>Email:</b> <a href="mailto:sales@nittan.co.uk">sales@nittan.co.uk</a> <b>Web:</b> <a href="http://www.nittan.co.uk">www.nittan.co.uk</a>
<b>D.o.P. Number: 01690</b>	
<b>EN54-11: 2001 - Type A Indoor Manual Call Point IP24</b>	
<b>For use with Nittan Evolution Protocol Only.</b> <b>Loop Voltage: 20 to 35 V d.c.</b> <b>Quiescent Current: 200µA</b> <b>Alarm Current: 2mA (LED ON).</b> <b>Ingress Protection: IP24</b> <b>Mass: 115g</b>  <b>Technical Data Sheet: TD-EV-MCP2-IP24</b>	